



This manual is for reference and historical purposes, all rights reserved.

This page is copyright© by M. Butkus, NJ.

This page may not be sold or distributed without the expressed permission of the producer

I have no connection with any camera company

On-line camera manual library

This is the full text and images from the manual. This may take 3 full minutes for the PDF file to download.

If you find this manual useful, how about a donation of \$3 to: M. Butkus, 29 Lake Ave., High Bridge, NJ 08829-1701 and send your e-mail address so I can thank you. Most other places would charge you \$7.50 for a electronic copy or \$18.00 for a hard to read Xerox copy.

This will allow me to continue to buy new manuals and pay their shipping costs.

It'll make you feel better, won't it?

**If you use Pay Pal or wish to use your credit card,
click on the secure site on my main page.**

SERVICE POLICY AND GUARANTEE

The Argus Camera and accessories are guaranteed against defective material and workmanship for 90 days after shipment. This guarantee is limited to the return of the camera to the factory with transportation charges prepaid. Any defects will be corrected and the camera returned prepaid.

To assure Argus owners of low upkeep cost of our cameras, after expiration of the above guarantee, the factory will inspect and readjust any Argus Camera shipped to them prepaid, and return it prepaid to the owner for the sum of \$1.00. This policy is effective for one year from date of purchase. This does not cover replacement of cameras broken through misuse or cameras which have been abused.

All Model C Filters, Sunshades, Cable Releases, Portrait Attachments, Copying Attachments and the Argus Marco-Kit fit the Model C-2 Camera. For further information on these items consult your local dealer or write to

INTERNATIONAL RESEARCH CORP.

4th and William Streets
Ann Arbor, Michigan

Instructions for Operating

MODEL C-2

argus CAMERA



**INTERNATIONAL
RESEARCH CORPORATION**
ANN ARBOR, MICHIGAN

GENERAL INSTRUCTIONS

Hold the Camera Steady

Never oil the shutter or other camera mechanism. Return the camera to our Service Department for adjustment or repair.

Form the habit of advancing the film for a new exposure immediately after taking a picture. This habit will prevent confusion and eliminate double exposure and blank frames.

There are five important steps to remember when making a picture: 1. Set the Shutter Speed. 2. Cock Shutter Set Lever. 3. Set Diaphragm Opening. 4. Focus on Main Object through Range Finder. 5. Advance film immediately after each exposure.

Study this instruction book carefully. Further information may be obtained by addressing INTERNATIONAL RESEARCH CORPORATION, Ann Arbor, Michigan.

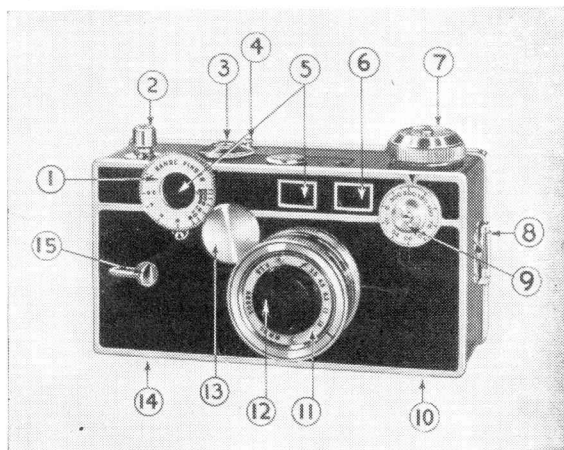
FILM SUGGESTIONS

The Model C-2 Argus is designed to use 35 mm. double perforated film. 35 mm. film is available in many different emulsions, including the new Ultra Speeds and Color Films. Film may be purchased from your local dealer in either bulk quantities or in convenient daylight loading cartridges ranging from 15 to 36 exposures.

Under good lighting conditions it is advisable to use either Eastman Panatomic X, Agfa Plenachrome or Dupont Superior for minimum grain size and maximum con-

trast. For all general photographic purposes, Agfa Superpan, obtainable in either 18 exposure Agfa-Argus cartridges or full 36 exposure rolls will be found ideal. For adverse lighting conditions such as indoor, theatre and candid shots it is recommended that either Eastman Super XX or Agfa Ultra Speed film be used. All film should be carefully developed in a fine grain developer.

THE MODEL C2 ARGUS



(FIGURE 1)

- | | |
|--------------------------------|--------------------------------|
| 1. Range Finder Knob and Scale | 8. Lock Clip |
| 2. Shutter Release | 9. Speed Button |
| 3. Counter Dial | 10. Tripod Socket |
| 4. Counter Dial Release Button | 11. Diaphragm Ring |
| 5. Range Finder Openings | 12. Lens |
| 6. View Finder | 13. Range Finder Coupling Unit |
| 7. Winding Knob | 14. Rewind Knob |
| | 15. Shutter Set Lever |

TO LOAD THE CAMERA

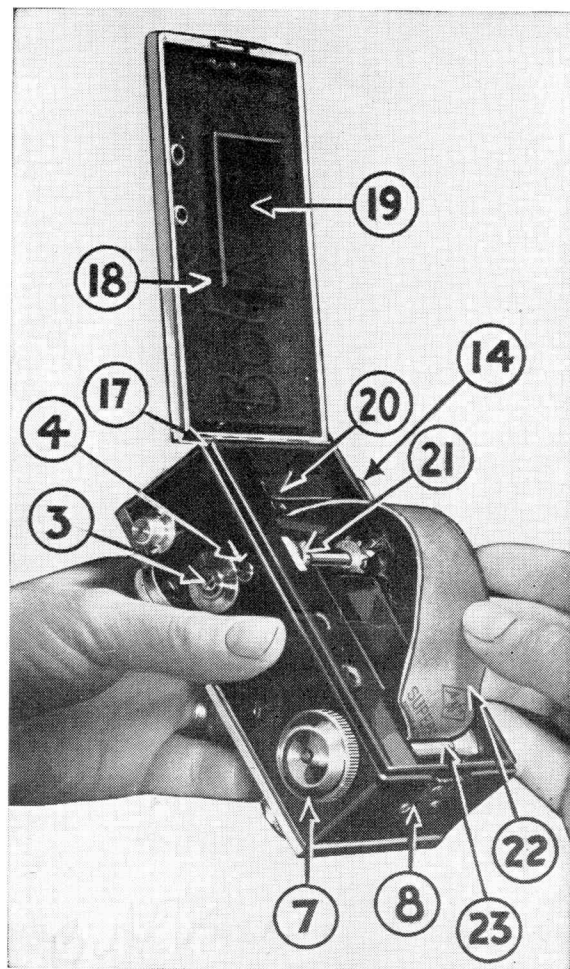
Grasp the camera in the left hand, and with the thumb depress lock clip (8, figure 2). With the thumb and forefinger of the right hand, raise hinged cover (18) while lock clip is depressed. During loading operation care should be taken not to place unnecessary strain on the hinge (17). The camera should not be lifted or carried by the open back cover.

It is advisable before loading film to clean all interior parts of the camera with a camel's hair brush. This will eliminate dust and film particles which may scratch the film while it is in the camera.

Draw out the film rewind knob (14) as far as it will come and insert the film magazine into the film cavity as in Figure 2. Snap the rewind knob back in place. This will prevent the magazine from falling out during the remainder of the loading operations. Pull enough film out of the magazine until it extends over the end of the camera case about one inch. The film (22, figure 2) should then be looped as shown and the end inserted in the slot of the winding shaft (23, figure 2).

The winding knob (7) should be turned in the direction of the arrow until the film lies flat in the film track. Advance the film until the full width is across the sprocket shaft (21) and the teeth are engaged in the perforations.

When using Agfa-Argus cartridges with



(FIGURE 2)

paper leader, two or three complete turns of the winding knob should be made before closing the back. After inspecting pressure pad (19) for dirt or film particles, close and lock the camera back.

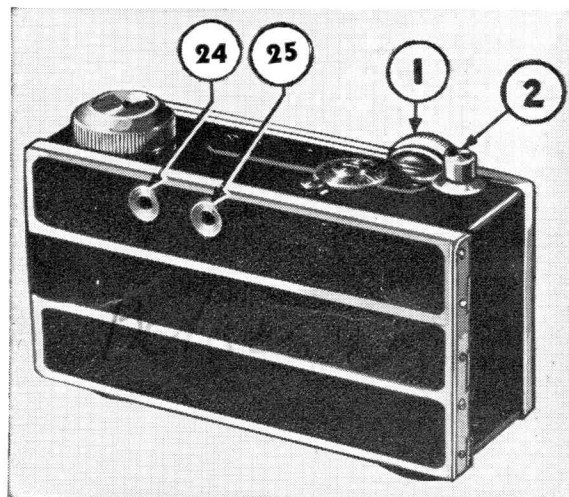
Turn film winding knob (7) until the counter dial (3) stops. Depress counter dial release button (4) *momentarily* until the counter dial moves, then again advance the film by turning winding knob. Repeat this operation until at least two frames of film have passed the counter dial. When loading with the Agfa-Argus paper leader cartridge the film should be advanced 10 or 12 turns *after closing* the back cover. When the perforated film passes the sprocket shaft the counter dial mechanism will become active. Advance the film at least two frames before setting the counter dial.

The counter dial (3) should now be turned with the thumb and forefinger in a *counter clockwise* direction until the "0" is in line with the white marker. The Camera is now ready for the first exposure.

If for any reason you desire to remove the film before the completion of a full roll of exposures, the following steps are necessary. Note the number of exposures already made and rewind the film by turning rewind knob (14). With a pencil write the number of exposures already made, for example 10, on the film or leader for future reference. When reloading this particular exposed film, proceed in the usual manner and reset the counter dial at zero after ad-

vancing the film 2 or 3 frames as you did with the first loading. Now advance the film to the figure 11 and the camera and film are again in normal exposing condition.

It is important to form the habit of advancing the film immediately after taking a picture. This prevents double exposure and blank frames.



TO TAKE PICTURES

View Finder

The view finder brings into focus slightly less of the picture than will actually be covered by the film. This prevents cutting off part of subjects and leaves a margin of

safety in the finished negatives to permit composition when enlarging. When sighting the camera the finder eyepiece (24, figure 3), is brought as close to the eye as possible. Vertical subject lines should be brought parallel with the vertical edge of the finder openings. The camera should be pressed firmly against the face when sighting and during exposure.

FOCUSING THE MODEL C-2 ARGUS

The Model C-2 Argus is equipped with a coupled sextant type split image range finder. Focusing is accomplished by moving the range finder knob (1, figure 3) while sighting through the range finder eye piece (25, figure 3).

Press the camera against the face and sight through the eyepiece the object to be photographed. The main object should always be used when focusing the camera.

Select a vertical line of the object and turn Range Finder Knob (1, figure 3) with the middle finger of the right hand until this line appears as one straight line from the bottom of the picture to the top. See figures A, B, and C. In some cases it may be necessary to tilt the camera slightly forward to bring the vertical object to the center of the picture.



A

B

C

(A) Range Finder correctly focused. Vertical lines appear unbroken.

(B) Range Finder focused for a distance beyond the main object.

(C) Range Finder focused for a distance closer than main object.

The lens is automatically brought into sharp focus on the object. Examine the range finder scale (1, figure 1) to find the exact distance of the object focused. The following table shows the distances of nearest and farthest objects in focus at various stops according to the range finder settings. By referring to the table you will be able to determine exactly how much foreground and background will be sharp.

The critical sharpness of your negatives depends largely upon correct focusing of your camera. Don't guess—focus through the range finder.

**Depth of Field Table for Models C and C-2
Argus Cameras**

Feet	f:3.5	f:4.5	f:6.3	f:11	f:18
3	2'10"-3'1"	2'10"-3'2"	2'9"-3'3"	2'8"-3'5"	2'6"-3'10"
3.5	3'4"-3'8"	3'4"-3'9"	3'3"-3'10"	3'0"-4'2"	2'11"-4'8"
4	3'9"-4'3"	3'9"-4'4"	3'8"-4'5"	3'5"-4'10"	3'1"-5'7"
5	4'8"-5'5"	4'7"-5'6"	4'5"-5'9"	4'1"-6'5"	3'8"-7'10"
6	5'6"-6'7"	5'5"-6'9"	5'3"-7'1"	4'9"-8'2"	4'2"-10'7"
8	7'2"-9'0"	7'0"-9'4"	6'8"-10'0"	5'11"-12'4"	5'1"-18'10"
10	8'9"-11'8"	8'5"-12'2"	8'0"-13'4"	6'11"-17'10"	5'10"-35'6"
15	12'5"-19'0"	12'2"-20'7"	10'11"-24'0"	9'0"-44'0"	7'3"-∞
25	18'6"-38'6"	17'3"-45'6"	15'4"-57'4"	11'10"-∞	9'0"-∞
50	29'5"-∞	26'4"-∞	22'2"-∞	15'8"-∞	10'10"-∞
100	41'7"-∞	35'8"-∞	28'5"-∞	22'3"-∞	12'3"-∞
∞	71'5"-∞	55'6"-∞	39'9"-∞	22'9"-∞	14'0"-∞

For quick action shots, where moving objects must be followed constantly, it may be advisable to sight through the range finder only. Focus with the range finder, manipulating the range finder knob with the middle finger. Keep the forefinger over the shutter release. The moment the object is brought into sharp focus, bring the forefinger down on the shutter release.

MAKE YOUR OWN PRINTS FOR LESS THAN A CENT EACH

Album prints, in $2\frac{3}{4} \times 4\frac{1}{4}$ Argus standard size, actually cost you but a penny apiece when you use an Argus Speed Printer and Argus Bromex Paper.

EASY, ECONOMICAL, FAST

No focusing, no trimming of paper; merely insert film in glass slide and place paper as shown in illustration. Press handle down for desired exposure. Paper is then developed in the usual manner.

See next page for example of picture made with Argus Speed Printer.



ACTUAL SIZE OF STANDARD ARGUS PRINTS

$2\frac{3}{4}$
x
 $4\frac{1}{4}$



$2\frac{3}{4}$
x
 $4\frac{1}{4}$

HERE is the actual size of pictures produced from 35 mm. film with an Argus Speed Printer on Argus Bromex paper.

Argus Bromex paper comes in single or double weight, glossy, semi-matt or silk finish, in soft, medium or hard. It is cut to the size illustrated, with allowance for an eighth of an inch border around picture, made specifically for use in Argus printers.

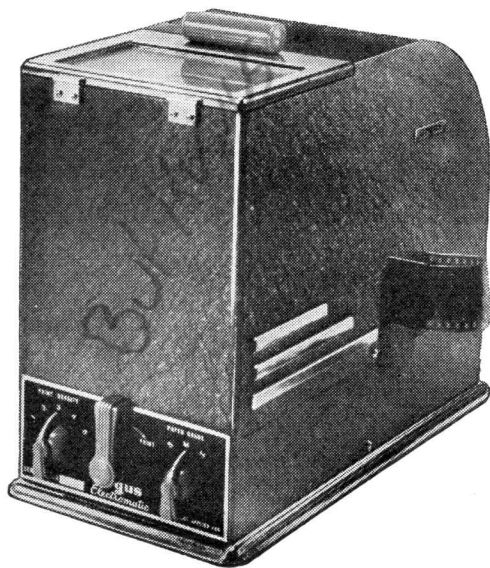
Both the Argus "Automatic" printer and the Argus "Electromatic" (illustrated on following page) operate on 110-120 volt AC or DC and handle strip film or single negatives.

NEW ARGUS ELECTROMATIC TAKES ALL GUESS-WORK OUT OF PRINT-TIMING

The "Electromatic" Speed Printer is equipped with a photo-electric "eye" which "reads" the density of your negative and gives proper exposure or timing in making prints. Merely set one indicator for negative density, another for paper surface being used, and flip the starting switch. When print is correctly exposed, the light goes off. Save paper by getting a **GOOD PRINT EVERY TIME**; eliminate trial and error methods.

List price

THE "ELECTROMATIC" \$35.00



THE SHUTTER

The speed dial is calibrated with ten speeds: 1/5 second, 1/10, 1/20, 1/30, 1/50, 1/75, 1/100, 1/150, 1/200, 1/300. To select a desired speed, rotate the speed dial until the desired speed is below the red arrow. This setting can be changed either before or after setting or cocking trip lever. Do not attempt to force the dial clockwise past the stop between 1/300 and 1/5 second. Turn the dial clear around in a counter-clockwise direction.

Speeds between those marked on the speed dial may be obtained by setting the dial between two selected speeds. For example: 1/15 second may be obtained by setting dial midway between 1/10 and 1/20.

To set the release for instantaneous exposures the release button dot must be in line with the letter "I". Select the desired shutter speed and set the shutter by pressing down the setting lever (15, figure 1) until a click is heard. The shutter is now set for taking a picture. When making the actual exposure, hold the camera tightly against the face and center the subject carefully in the view finder. Slowly "squeeze" the release button until the shutter trips. It is important that the camera be held rigid while making the actual exposure and shutter speeds under 1/30 second should be made with the assistance of a tripod or other suitable support.

A bulb exposure may be made by placing the red dot on the release button (2, figure 1) directly above the Letter "B". To change the release from "I" (instantaneous) to "B", merely depress the release button as far as possible and turn 1/4 revolution in a clockwise direction. Release the pressure and the button will snap into normal position. When the red dot is opposite the letter "B" the shutter is ready for operation for bulb exposure. To operate the shutter press the release button and the shutter will remain open as long as the button is held down. When making bulb exposures, have the speed dial set at 1/50 or faster.

For very long exposure, use the Model C-2 Argus cable release to hold the shutter open. A Model C-2 Cable Release may be purchased from your local dealer. To attach, first set shutter release to "B" (bulb) or "I" (instantaneous). Unscrew shutter release cap and remove rubber ferrule. Screw on cable release. The set screw located at the plunger end is for the purpose of locking the release for "Time" exposures after shutter has been opened on "Bulb." *Use with a slow even pressure.*

REMEMBER: 1. Shutter speeds may be changed before or after setting trip lever. 2. *Do not attempt to force trip lever unless the release button is opposite "I" or "B".* 3. A change from "I" or "B" must be made before setting the shutter.

CAUTION: Never oil the shutter or other mechanism.

STOP OPENING

The amount of light which passes through the lens is regulated by the diaphragm control ring (11, figure 1). The different openings are given in f: stops of 3.5, 4.5, 6.3, 11 and 18. The openings are set by turning the diaphragm ring with the two small buttons which are placed on the face of the ring at each end of the scale. Starting from f:18, each succeeding stop admits approximately twice as much light as the preceding stop. Thus, if a correct exposure of 1/30 is required at f:11 only 1/50 is necessary at f:6.3 and 1/100 at 4.5. Decreasing the diaphragm opening increases the depth of focus or range of sharpness accordingly. (See table, page 10).

EXPOSURES

For uniform and accurate results it is advisable to use a reliable exposure meter. The beginner may use the following table which is based on a film speed of Weston 24. Films of other Weston speeds should be given proportionately shorter or longer exposures.

Special attention should be given to color films which do not have the wide latitude characteristic of black and white emulsions. Consult the exposure guide packed with each roll of color films.

**Exposure Table for Models C and C-2
Argus Cameras**

			Before 10 A.M. and After 2 P.M.		10 A.M. to 2 P.M.	
			Shutter Speed	Stop	Shutter Speed	Stop
Shaded Loca- tions	Summer	Clear	1/50	f:6.3	1/30	f:11
		Overcast	1/30	f:6.3	1/50	f:6.3
		Very Dull	1/30	f:4.5	1/30	f:6.3
	Winter	Clear	1/50	f:4.5	1/50	f:6.3
		Overcast	1/30	f:4.5	1/50	f:4.5
		Very Dull	1/30	f:3.5	1/30	f:4.5
Por- traits	Summer	Clear	1/50	f:6.3	1/100	f:6.3
		Overcast	1/75	f:4.5	1/50	f:6.3
		Very Dull	1/50	f:4.5	1/75	f:4.5
	Winter	Clear	1/50	f:4.5	1/50	f:6.3
		Overcast	1/50	f:3.5	1/50	f:4.5
		Very Dull	1/30	f:3.5	1/50	f:3.5
Street Scenes Snap- shots Groups in open	Summer	Clear	1/100	f:6.3	1/50	f:11
		Overcast	1/50	f:6.3	1/100	f:6.3
		Very Dull	1/75	f:4.5	1/50	f:6.3
	Winter	Clear	1/50	f:6.3	1/100	f:6.3
		Overcast	1/75	f:4.5	1/50	f:6.3
		Very Dull	1/50	f:4.5	1/75	f:4.5
Distant Land- scapes	Summer	Clear	1/50	f:11	1/50	f:18
		Overcast	1/100	f:6.3	1/50	f:11
		Very Dull	1/50	f:6.3	1/100	f:6.3
	Winter	Clear	1/100	f:6.3	1/50	f:11
		Overcast	1/50	f:6.3	1/100	f:6.3
		Very Dull	1/75	f:4.5	1/50	f:6.3
Marine views and Snow Scenes	Summer	Clear	1/100	f:18	1/200	f:18
		Overcast	1/100	f:11	1/200	f:11
		Very Dull	1/200	f:6.3	1/300	f:6.3
	Winter	Clear	1/100	f:11	1/200	f:11
		Overcast	1/200	f:6.3	1/300	f:6.3
		Very Dull	1/100	f:6.3	1/200	f:6.3
Sports Shots in open	Summer	Clear	1/300	f:3.5	1/300	f:4.5
		Overcast	1/200	f:3.5	1/300	f:3.5
		Very Dull	1/100	f:3.5	1/200	f:3.5
	Winter	Clear	1/200	f:3.5	1/300	f:3.5
		Overcast	1/150	f:3.5	1/200	f:3.5
		Very Dull	1/100	f:3.5	1/150	f:3.5

REMOVING THE FILM

Watch the exposure counter when nearing the end of a roll and do not pull or strain the film for additional exposures. If the film is pulled loose from the cartridge spool it will be necessary to remove it in a darkroom. After the roll has been completely exposed, rewind the film by turning the rewind knob (14, figure 2) in the direction of the arrow. As the film is rewound a click will be heard for each exposure. Continue to rewind for several turns after this clicking stops. When using film with paper leader continue to rewind the film until the winding knob stops revolving. This is done to permit the paper leader to completely cover and protect the film. When rewinding film, care should be taken that the free hand does not retard the motion of winding knob or counter dial.

The film should be developed shortly after removal from the camera and fine grain developing is recommended. The success of enlargements depends greatly upon correct development of your negatives. There are many excellent developers on the market at the present time and if your local photo finisher does not offer fine grain developing write International Research Corporation for full particulars regarding fine grain developing and 35 mm. laboratories specializing in this work.

The secret of clear sharp negatives depends upon three factors: *Correct exposure, careful fine grain developing and holding the camera rigid during exposure.*

Indoor exposures may be made with two No. 1 photo flood lamps in reflectors 4 feet from subject exposing 1/50 second f:3.5.

REMOVING THE LENS

In order to use the lens on the Model C Argus Enlarger and other Argus Accessories or to interchange lenses, the lens must be removed from the camera. To remove the lens first set the range finder at three feet. Unscrew the coupling unit (13, figure 1) by turning counter-clockwise. The coupling unit complete with the coupling gear (26, figure 4) can be lifted out readily. Unscrew the lens by turning counter-clockwise in the usual manner.

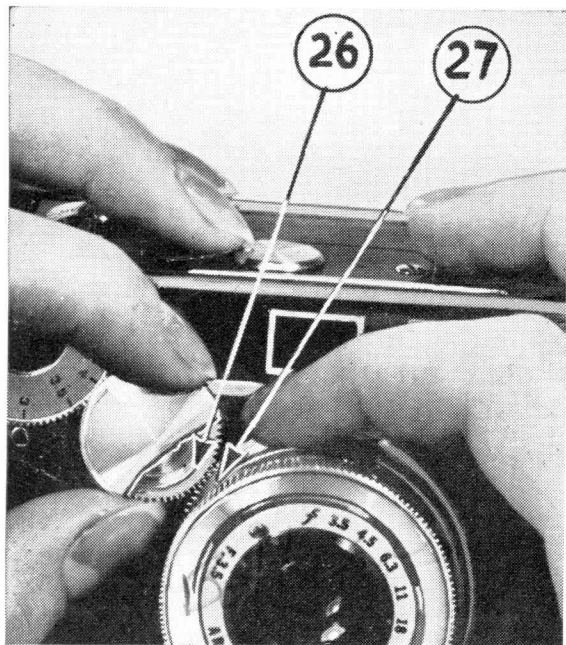


FIGURE 4
16

When replacing the lens screw it into place in the usual manner by rotating the entire lens assembly in a clockwise direction. Turn until the lens is snugly seated. Care should be taken when starting the lens into place that the threads mesh properly, otherwise threads on the camera case and lens barrel may become damaged. Set the range finder to the 3-foot mark. Reinsert the coupling unit so that the uppermost tooth in the focusing rack (27, figure 4) engages in the coupling gear (see illustration). Be sure that the range finder knob has not moved from the 3-foot mark during this operation. The above steps must be given close attention or the camera will not focus correctly.

Rotate the rangefinder knob toward the infinity (∞) end of the scale. If it moves beyond the ∞ mark, remove the coupling unit and set the rangefinder knob so that the 3 foot mark lines up as close as possible to the arrow. Reassemble and check on ∞ . The ∞ mark MUST line up with arrow.

TELEPHOTO LENS

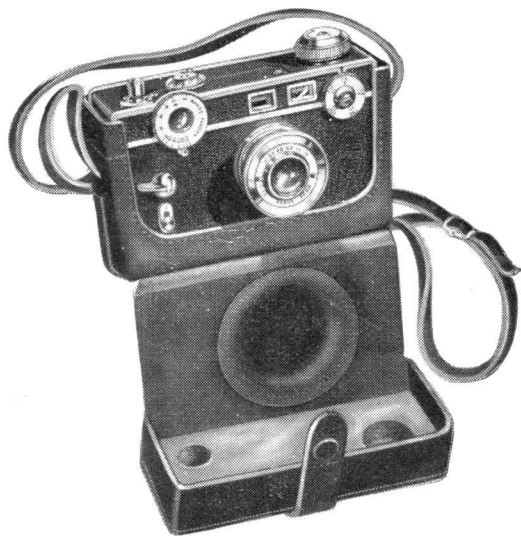
Telephoto lenses for the Argus Model C-2 will be available shortly. They will be equipped with a rack for coupling to the range finder in a manner similar to that used with the Cintar f:3.5. For further information on Telephoto lenses consult your local dealer.

TRIPOD SOCKET

The tripod socket (10, figure 1) is tapped with the standard American thread. Any American tripod will fit Argus Cameras.

argus MODEL C and

C2 ACCESSORIES



SUPER REDYCASE

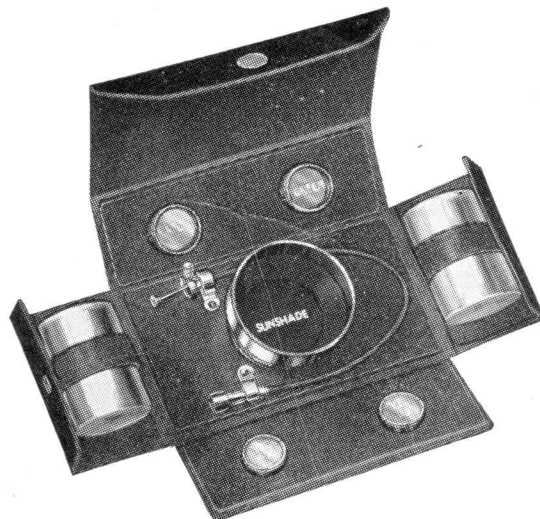
A SUPER DELUXE CARRYING CASE finely tailored of highest quality leather in rich Cordovan shade. Entire top and front instantly drops for action leaving finders and all controls easily accessible. Has bottom hole for tripod mounting or safety screw plug. Fitted with strong 42" leather neck strap having buckle adjustment.

Description	Price
Super Redycase	\$ 6.00

Code Word	Part No.
CECA	C-70

Net weight 7 oz. Shipping weight 1½ lbs.

18



LENS ACCESSORY KIT

Beautifully tailored of fine Cordovan leather with loops to accommodate two film cartridges and containing the below listed items which can be purchased separately at individual prices shown.

Code Word	Part No.	Description	Price
CINSE	C-60	Lens Shade	\$2.00
CETU	C-61	2X Yellow Filter	1.25
CETRI	C-62	3X Green Filter	1.75
CEFOR	C-63	4X Yellow Filter	1.25
CEFI	C-64	5X Red Filter	1.75
CABA	C-71	10" Adapter Cable Release...	.75
CINCA	C-65	Leather Accessory Case	2.75

\$11.50

Lens Accessory Kit of above seven items if ordered complete

Code Word	Part No.	Description	Price
CEKIT	C-72	Accessory Kit	\$10.00

Net weight 6 oz. Shipping weight 8 oz.

19